



INNOVATIVE PLASTICS

LEXANTM SHEET PORTFOLIO

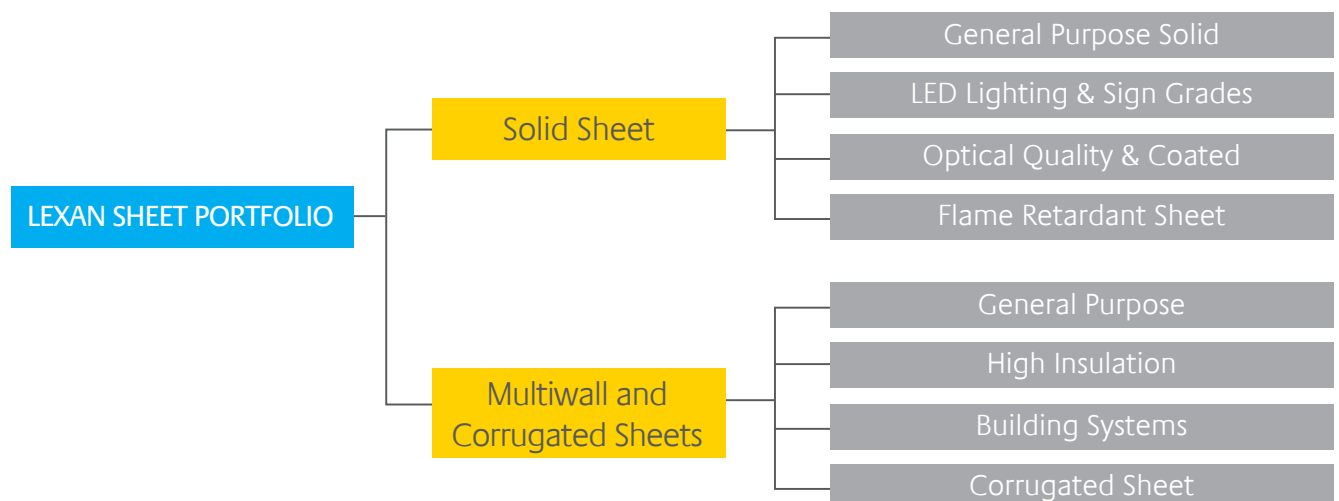
SPECIALTY FILM & SHEET, AMERICAS



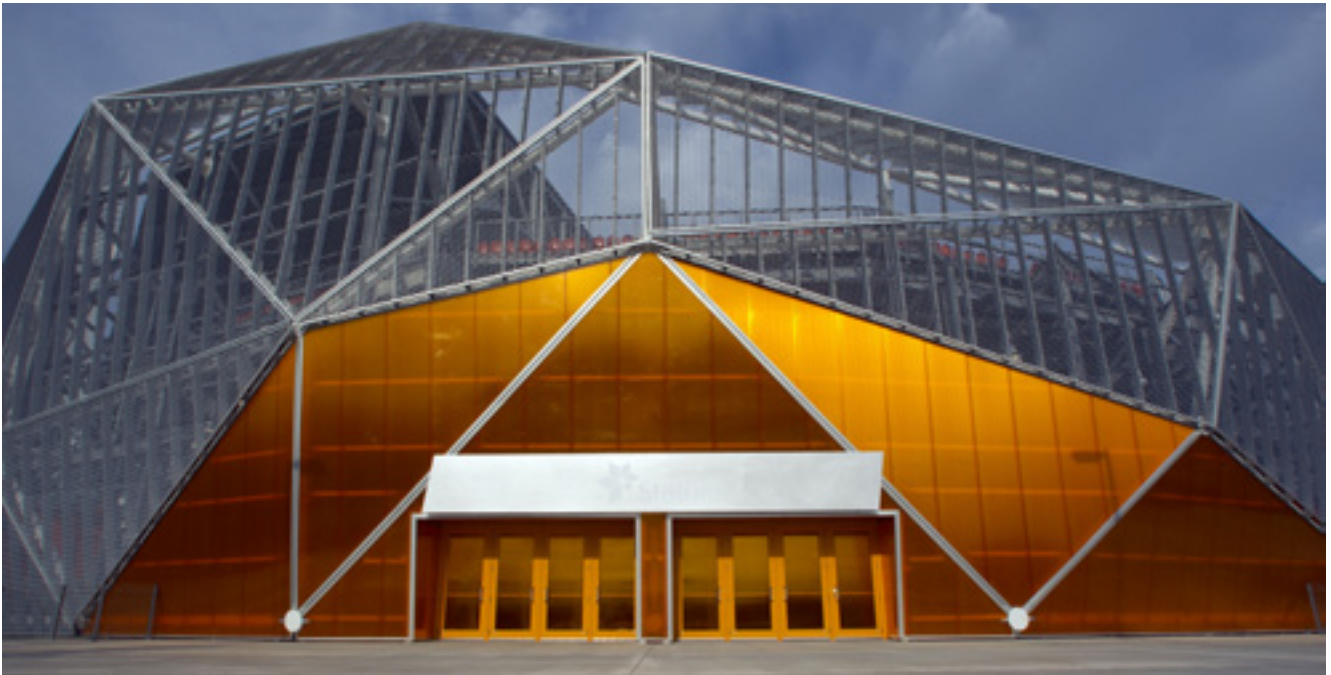
CHEMISTRY THAT MATTERSTM

SABIC'S SPECIALTY FILM & SHEET BUSINESS OFFERS HIGH QUALITY, ENGINEERED THERMOPLASTIC SOLID AND MULTIWALL SHEET PRODUCTS FOR USE IN A WIDE VARIETY OF INDUSTRIES.

Our LEXAN™ sheet products are used across a wide variety of industries, including the aerospace, transportation, sign, electrical and electronics, building and construction, material handling, telecommunications and specialty vehicles and machinery industries, among others. Our sheet portfolio is backed by advanced technical support and application development services around the world, to meet our customers' global specification needs with local supply.



CONSTANTLY ADDING VALUE: PROVIDING MORE THAN JUST HIGH QUALITY PRODUCTS



SABIC's Specialty Film and Sheet business is a leading supplier of high performance engineering sheet products, serving customers around the world in a broad spectrum of applications. Our virtually unbreakable, lightweight, fire resistant sheet product portfolio includes a wide variety of structures, ranging from solid to foamed, multiwall and corrugated sheet. The company has integrated extrusion processes, surface texturing and coating technologies to provide value added solutions across many industries.

SABIC offers mono- and multi-layer extrusion capabilities and in-line master sheeting both in-house and through its distribution and converter network. SABIC's application development facilities provide design support in thermoforming, hot-line bending, physical testing and fabrication to customers.

At SABIC, we are dedicated to meeting our customers' ever changing needs with our high performance LEXAN™ sheet portfolio. Our material solutions and services help our customers reduce their system costs, create innovative designs and environmentally responsible products.

SABIC's ongoing investment in world-class technologies demonstrates our commitment to helping our customers' technical requirements, application development needs, and business goals.

MULTIWALL SHEET

SABIC offers a multiwall polycarbonate products with various structures under LEXAN™ THERMOCLEAR™ sheet portfolio. Our products can provide an outstanding balance of lightweight, high impact strength and stiffness. These products facilitate easy and fast installation and are beneficial to the structural design for a lighter weight and cost efficient application.

In addition, LEXAN THERMOCLEAR sheet provides excellent thermal insulation, UV and flame resistance, and long-term light transmission. LEXAN THERMOCLEAR sheet is available in clear, opal white, solar control, and other custom colors. The product also comes in a variety of optional coatings such as the Easy Clean or Dripgard versions, to allow sheets to be easily cleaned or prevent the formation of condensation.





GENERAL PURPOSE MULTIWALL SHEET

SABIC has one of the broadest portfolios of general purpose multiwall sheets available in two and three wall structures. These products are available in various gauges, weights and in a wide color range.

POTENTIAL APPLICATIONS:

- Commercial, residential, and stadium roof glazing
- Carports
- Greenhouses
- Swimming pool covers
- Industrial roofing, skylights
- Signage


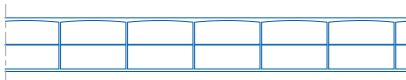
KEY BENEFITS:

- Lightweight and high stiffness
- High impact strength
- Long-term light transmission
- Ease of installation
- Excellent thermal insulation and flame resistance
- Optional two side UV protection, avoiding installation errors, and improving cutting yields
- Broad portfolio of structures, coatings and colors
- Custom widths and cut/yield service availability



THERMOCLEAR Softlite offers up to 79% light transmission with 100% light diffusion.

PRODUCT OVERVIEW (SELECTED GRADES)

Structure Name	Structure	Gauge (in / mm)	Weights (lb/ft ² / kg/m ²)	U-Value BTU/h.ft ² °F W/m ² °C
LEXAN™ THERMOCLEAR™ 15 Sheet - General Purpose				
2-wall R-structure		0.177 / 4.5	0.205 / 1.0	0.679 / 3.86
		0.236 / 6.0	0.266 / 1.3	0.627 / 3.56
		0.315 / 8.0	0.348 / 1.7	0.574 / 3.26
		0.394 / 10.0	0.409 / 2.0	0.532 / 3.02
3-wall T-structure		0.315 / 8.0	0.310 / 1.5	0.514 / 2.92
		0.394 / 10.0	0.348 / 1.7	0.472 / 2.68
		0.630 / 16.0	0.573 / 2.8	0.399 / 2.27

Surface Treatment: LEXAN THERMOCLEAR sheets are standard supplied on both sides with a UV protective layer with a 10 or 15 year limited warranty. Upon request special surface treatments can be offered. "Easy Clean" grade can offer improved self-cleaning. "Dripgard" grade may avoid formation of condensation droplets and "SUNXP™" for 15 years UV resistance and improved delta of yellowness and loss of light transmission. Note: not all surface treatments are available for each structure

Colors: LEXAN THERMOCLEAR sheets are available in a wide range of colors including special Solar Control versions.



HIGH INSULATION GRADES

The drive to reduce energy consumption to cut costs is one of the highest priorities in building and construction today. SABIC's high insulation, polycarbonate (PC) LEXAN™ sheet products offer many ways to increase energy efficiency. The multi-wall structure of LEXAN THERMOCLEAR™ sheet offers significant advantages when thermal insulation is a major consideration. The hollow form provides excellent insulation to avoid heat escape during wintertime and solar control products restrict heat buildup during summertime.



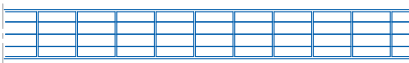
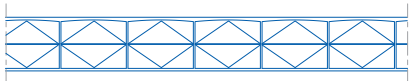
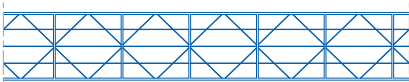
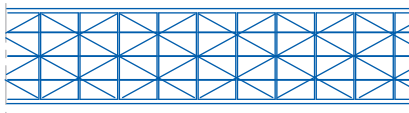
POTENTIAL APPLICATIONS:

- Verandas
- Office buildings
- Shopping centers
- Architectural projects

KEY BENEFITS:

- High thermal insulation
- Solar control version available
- Low weight per area, even at high thickness
- 2 sides UV protection
- Excellent stiffness to weight ratio

PRODUCT OVERVIEW (SELECTED GRADES)

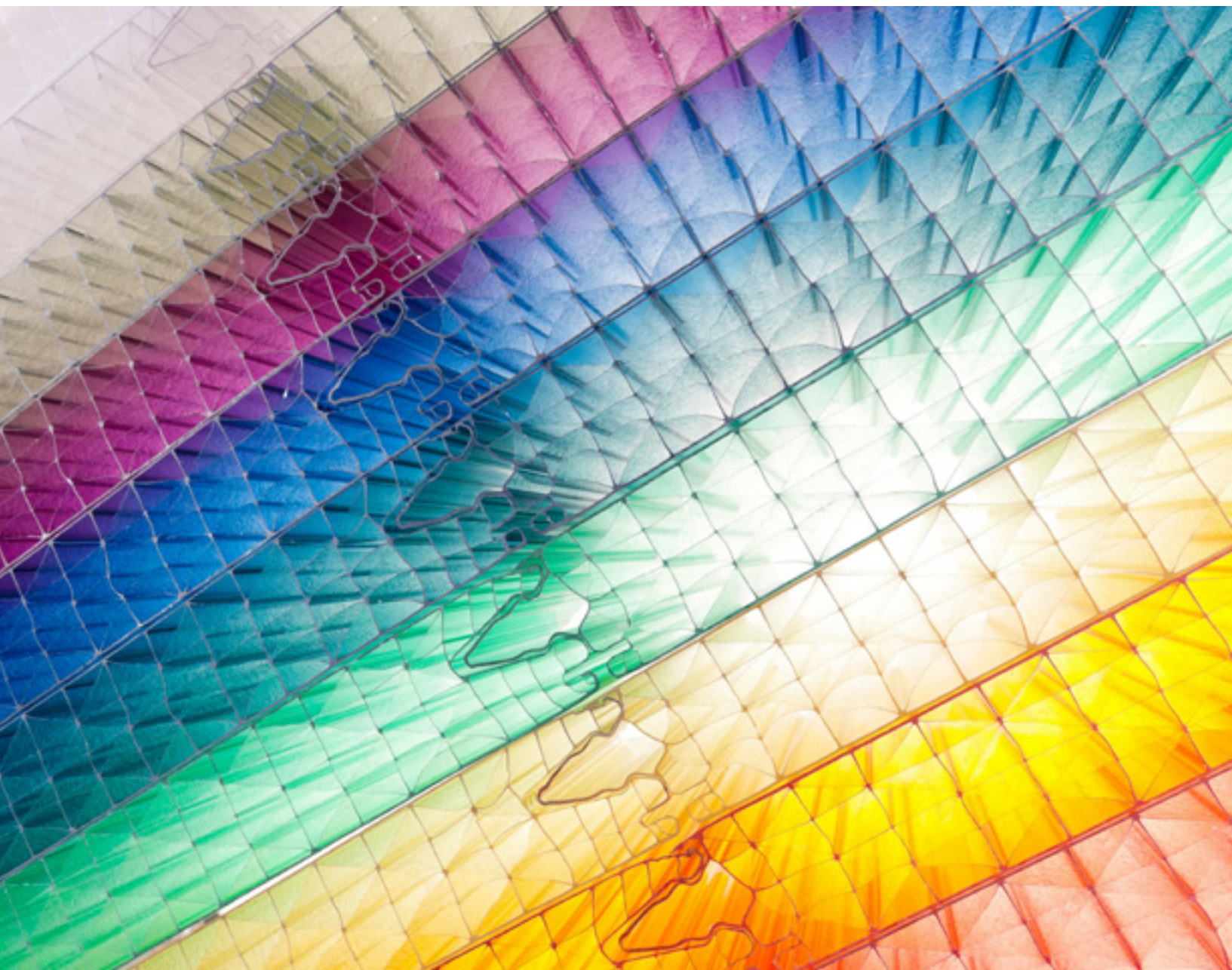
Structure Name	Structure	Gauge (in / mm)	Weights (lb/ft ² / kg/m ²)	U-Value BTU/h.ft ² . °F W/m ² °C
LEXAN THERMOCLEAR Sheet plus High Insulation / Stiffness				
5-wall R-structure		0.394 / 10	0.360 / 1.75	0.421 / 2.39
3-wall X-structure		0.630 / 16	0.573 / 2.80	0.370 / 2.10
5-wall X-structure		0.630 / 16	0.553 / 2.70	0.331 / 1.88
		0.787 / 20	0.655 / 3.20	0.297 / 1.69
		0.984 / 25	0.696 / 3.40	0.266 / 1.51
		1.260 / 32	0.778 / 3.80	0.232 / 1.32
9-wall X-structure		1.575 / 40	0.881 / 4.30	0.193 / 1.10
		1.969 / 50	0.983 / 4.80	0.174 / 0.99

Surface Treatment: LEXAN THERMOCLEAR sheets are standard supplied on both sides with a UV protective layer with a 10 or 15 year limited warranty. Upon request special surface treatments can be offered. "Easyclean" grade can offer improved self-cleaning, "Dripgard" grade may avoid formation of condensation droplets and "SUNXP" for 15 years UV resistance and improved color stability and loss of light transmission. Note: not all surface treatments are available for each product.

Colors: LEXAN THERMOCLEAR sheets are available in a wide range of colors including special Solar Control versions.

MULTIWALL & CORRUGATED BUILDING SYSTEMS

The LEXAN™ building systems and corrugated sheet portfolio provides creative glazing solutions for industrial roofing and facades. Characterized by the outstanding high impact resistance and excellent mechanical properties, each product in the portfolio is designed to provide value by lowering system costs and consistent high quality as each product is designed using custom-made configurations for fast on-site assembly.



POTENTIAL APPLICATIONS:

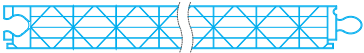




- Facades
- Industrial roofing
- Roofing for offices and shopping centers
- Curtain Walls
- Siding

KEY BENEFITS:

- Smart connection systems reducing need for complex aluminum profiles
- Tailor-made low cost corrugated panels for easy connection with aluminum sandwich panels
- Seamless facade designs
- Excellent water and air tightness
- Light weight and cost efficient
- Creates high quality diffused light
- Easy and fast installation
- Excellent resistance to UV aging
- Custom colors possible



PRODUCT OVERVIEW

Structure Name	Structure	Description / Key Features	Width (in / m)	Weight (lb/ft² / kg/m²)
General Purpose				
LEXAN™ THERMOCLICK™ sheet 40mm		<ul style="list-style-type: none"> - Facade panel with integrated connection - 40 mm thickness for high insulation - X-structure for high stiffness - High insulation U-value of 0.223 BTU/h ft² °F / 1.27 W/m² °K 	19.690 / 0.50	0.819 / 4.00
LEXAN THERMOCLICK sheet 50mm		<ul style="list-style-type: none"> - Facade panel with integrated connection - 50 mm thickness for ultra-high insulation - Ultra high insulation U-value of 0.176 BTU/h ft² °F / 1.0 W/m² °K 	39.370 / 1.00	1.055 / 5.15
LEXAPANEL™ Standing Seam Sheet		<ul style="list-style-type: none"> - Facade panel with integrated connection - 25 mm / 0.984 in thickness for ultra-high insulation - Insulation U-value of 0.34 BTU/h ft² °F / 1.93 W/m² °K 	24-48 / 0.66-1.22	0.760 / 3.70
LEXAN THERMOPANEL™ sheet		<ul style="list-style-type: none"> - Panel for industrial roofing applications - 30 mm / 1.18 in. thickness for high insulation - Multiple wing designs for optimal connection to metal sandwich panels - Insulation U-value of 0.276 BTU/h ft² °F / 1.57 W/m² °K 	37.200-39.370 / 0.95 - 1.00	0.737 / 3.60
LEXAN corrugated sheet		<ul style="list-style-type: none"> - Three corrugated shapes available - Suitable for climate with low insulation needs - Low cost per area - Nominal thickness 0.8 mm/0.03" 	50 / 1.27	0.240 / 1.17

SOLID SHEETS

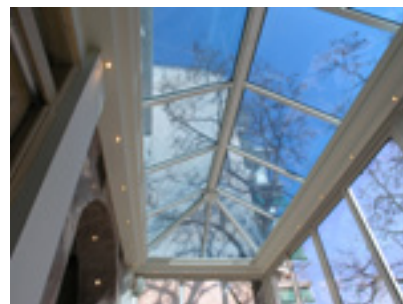
Based on high-performance LEXAN™ resin, SABIC's portfolio of solid polycarbonate sheet products help our customers develop lightweight, durable parts with best-in-class performance across a wide variety of industries. These virtually unbreakable LEXAN sheet products are available in clear and a wide range of transparent, translucent, and opaque colors that are available with optional UV protection on one or both sides.

POTENTIAL APPLICATIONS:

- Machine guards
- Roof and facade glazing
- Signage & LED light covers
- Sound walls
- Carports
- Transportation
- Electrical and electronics

KEY BENEFITS:

- High impact resistance
- Excellent light transmission
- High heat resistance
- Wide color range availability
- UV protection and weathering resistance
- Light weight
- Large sheet sizes
- Grades with increased flame retardancy



Source: Rytec Corporation



PRODUCT OVERVIEW

Product	Description / Key Features	Gauge Range (in / mm)
General Purpose		
LEXAN™ 9030 / 9034 sheet	- General purpose polycarbonate sheet	0.030-0.500 / 0.76-12.70
Flame Retardant		
LEXAN 9034V sheet	- Higher UL rating than standard sheet - 9034V is V2 rated from 0.06-0.235 in and V0 rated from 0.236 to 0.5 in	0.060-0.500 / 1.50-12.70
Food & Drug Administration Approved Grades		
LEXAN 9444 sheet	- FDA approved sheet for a wide range of food applications	0.030-0.500 / 0.76-12.70
Textured -purpose of light diffusion, privacy, and 3D printing.		
LEXAN 90311 sheet	- Haircell Texture	0.093-0.118 / 2.36-3.00
LEXAN 90314 sheet	- Velvet	0.040, 0.093 and 0.118 / 1.00, 2.36 and 3.00
LEXAN 90316 sheet	- Prismatic K40	0.093-0.125 / 2.36-3.20
LEXAN 903173U sheet	- UV Resistant - Prismatic K12	0.125-0.156 / 3.20-4.00
LEXAN 90318 sheet	- Translucent pebble-finished privacy glazing - Vertical and overhead interior applications	0.118-0.236 / 3.00-6.00
LEXAN 90355 sheet	- Velvet, low-gloss	0.040-0.060 / 1.00-1.50
UV Resistant		
LEXAN XL102UV sheet	- UV-resistant on both sides for overhead and vertical glazing applications - 10 year limited warranty against breakage, yellowing, and loss of light transmission	0.093-0.236 / 2.36-6.00
LEXAN™ EXELL™ D sheet	- UV-resistant on both sides for overhead and vertical glazing applications - 10 year limited warranty against breakage, yellowing, and loss of light transmission	0.315-0.590 / 8.00-15.00
LEXAN XLD SCIR sheet	- Solar Control Infrared Sheet for reduction of heat build up - UV-resistant on both sides for overhead and vertical glazing applications - 10 year limited warranty against breakage, yellowing, and loss of light transmission	0.157-0.472 / 4.00-12.00
Sign grades		
LEXAN SGC100 sheet	- Clear LEXAN SGC100 sheet (polish/polish) has a proprietary UV resistant surface on one side - Backed by a limited warranty against breakage, yellowing, and loss of light transmission - Suited for second surface decorated signs or whenever color shift is objectionable	0.093-0.236 / 2.36-6.00
LEXAN SG308 sheet	- UV resistant surface on the textured surface - Backed by a limited warranty against breakage, yellowing, and loss of light transmission - Suited for second surface decoration	0.093-0.236 / 2.36-6.00
LEXAN SG404 sheet	- Provides superior weatherability for colors - Warranted for 5 years against breakage and surface failure	0.093-0.236 / 2.36-6.00
LEXAN SG410 sheet	- Provides best-in-class weatherability for white sign sheet - Warranted for 10 years against yellowing (in white), breakage and surface failure	0.118-0.177 / 3.00-4.50
LEXAN SGC440B sheet	- Unique diffusion technology to provide excellent hiding of light sources - Providing superior optically bright signage - Optimized for LED backlights	0.118-0.177 / 3.00-4.50

OPTICAL QUALITY & COATED SHEET

High optical quality LEXAN™ sheet materials from SABIC made of polycarbonate resin, combine crystal clear transparency with lightweight. Virtually unbreakable, LEXAN OQ sheet features the latest technology in reducing ripple and distortion and meets stringent, best-in-class industry leading optical specifications.



OPTICAL QUALITY SHEET

LEXAN™ OQ sheet is one of the best optical quality materials for the glazing of forestry vehicles, high speed trains, high security facilities, and bullet resistant glass-PC laminates for VIP, military, and police vehicles. While providing easy maintenance, these lightweight, shatter-proof products also offer excellent vision and long-term appearance.

POTENTIAL APPLICATIONS:

- Base sheet for 3D vehicle glazing
- Base sheet for coated sheet
- Layers in (ballistic) safety laminates
- Visors & goggles

KEY BENEFITS:

- Low distortion level
- Minimal number of point defects
- Available in custom colors
- Suitable for lamination with glass by PU interlayers
- High impact & excellent transparency
- Light weight (50% lighter than glass)

PRODUCT OVERVIEW

Product	Description / Key Features	Gauge Range (in / mm)
LEXAN ULG1003 sheet	<ul style="list-style-type: none">- Highest optical quality sheet produced in clean room- Lowest number of point defects- Very low distortion level	0.098-0.472 / 2.50-12.00
LEXAN 9034HO sheet	<ul style="list-style-type: none">- Optical quality sheet with low distortion- Low number of point defects	0.030-0.500 / 0.76-12.70





COATED SHEET

LEXAN™ MARGARD™ sheet offers optical clarity in combination with enhanced abrasion and UV resistance performance which can make it an excellent candidate for safety and security glazing to suit a wide range of applications. Available in clear or tints, it can be used for both flat and limited curved glazing. Proprietary coating of MARGARD sheet offers high abrasion resistance, anti-fog performance, and increased resistance to UV weathering.

POTENTIAL APPLICATIONS:

- Specialty vehicle glazing
- Architectural and Window Glazing
- Police vehicle glazing
- Motorcycle windshields
- Safety laminate
- Train glazing
- Protective glazing
- Sound-walls
- Visors & goggles
- Machine guards
- Transit shelters

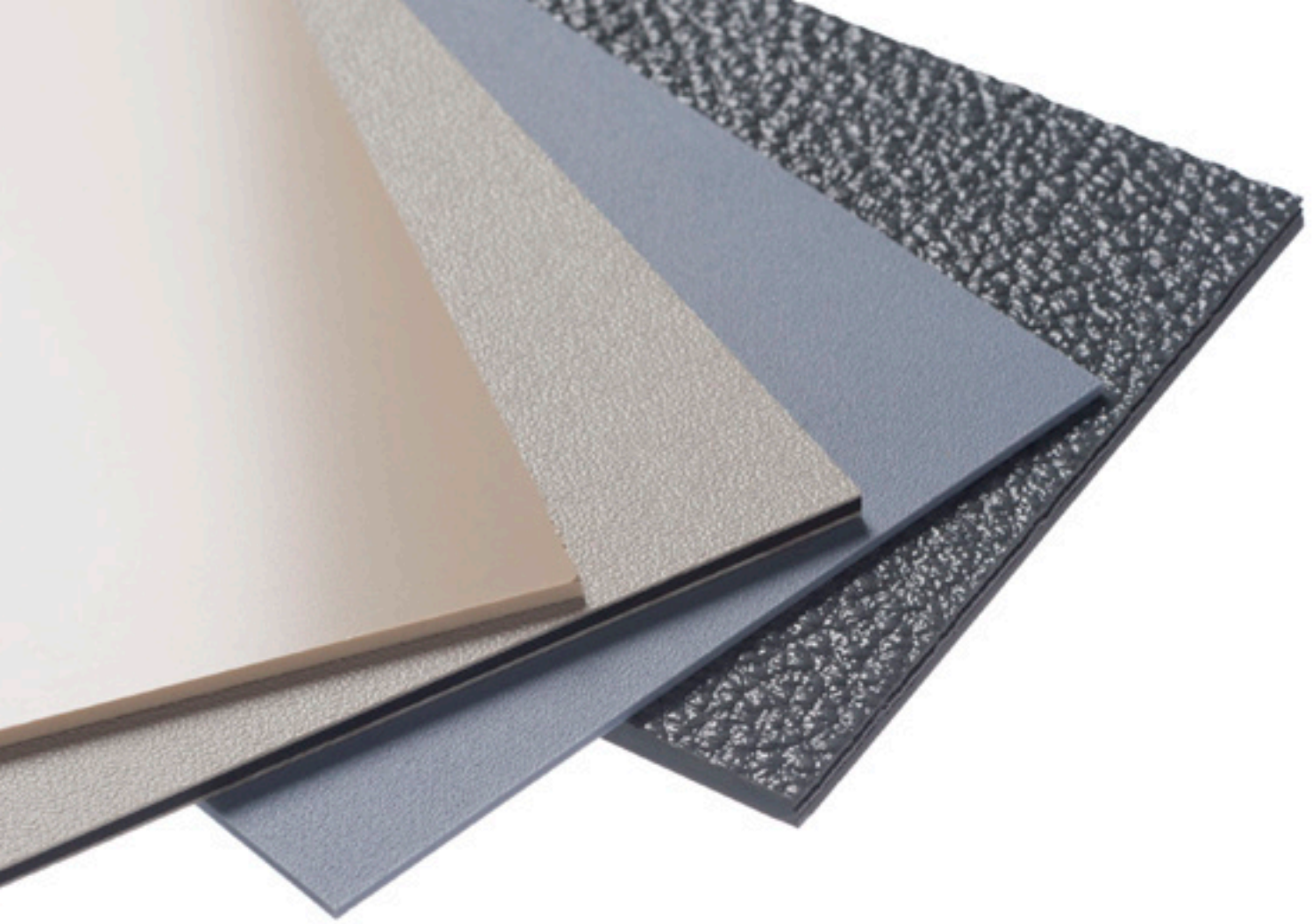
KEY BENEFITS:

- Abrasion resistance
- Resistance to UV weathering
- Graffiti resistance
- Enhanced chemical resistance
- Formability on select coatings
- Optional anti-fog coating available



PRODUCT OVERVIEW

Product	Description / Key Features	Gauge Range (in / mm)
Products for flat applications		
LEXAN MARGARD MR10 sheet	<ul style="list-style-type: none"> - Exclusive abrasion resistant MARGARD surface on both sides - 10 year written limited warranty against breakage, yellowing, loss of light transmission and coating delamination - Excellent balance of weatherability and abrasion resistance 	0.060-0.500 / 1.50-12.70
LEXAN MARGARD MR10XL sheet	<ul style="list-style-type: none"> - Extra-long size MR10 sheet (97"-144") 	0.177-0.500 / 4.50-12.70
LEXAN MARGARD MR101LG sheet	<ul style="list-style-type: none"> - 1 side coated - Ripple orientated - For high optic applications 	0.177-0.500 / 4.50-12.70
LEXAN MARGARD MRT sheet	<ul style="list-style-type: none"> - Exclusive abrasion resistant MARGARD surface on both sides - Ripple orientation for transportation needs 	0.118-0.500 / 3.00-12.70
LEXAN MARGARD FRA25C sheet	<ul style="list-style-type: none"> - Abrasion, UV resistant MARGARD coating surface on both sides - Designed for dual-glazed rail applications meeting FRA Type I and II 	0.250 / 6.35
LEXAN MARGARD FRA460 sheet	<ul style="list-style-type: none"> - Abrasion, UV resistant MARGARD coating surface on both sides - Designed for single glazed rail applications meeting FRA Type I and II ratings 	0.460 / 12.00
LEXAN MARGARD CTG sheet	<ul style="list-style-type: none"> - Coated Thin Gauge LEXAN CTG sheet is intended for use in formed and fabricated applications requiring abrasion resistant properties - Visor and goggle applications 	0.030-0.093 / 0.75-2.36
LEXAN MARGARD CTGXTAF sheet	<ul style="list-style-type: none"> - Formable coated thin gauge with improved weathering performance on one side and antifog coating on other - Visor and goggle applications 	0.030-0.118 / 0.75-3.00
LEXAN MARGARD MRFAF2 sheet	<ul style="list-style-type: none"> - Abrasion resistant and anti-fog coating on one or two sides 	0.030-0.236 / 0.76-6.00
LEXAN MARGARD MR5E sheet	<ul style="list-style-type: none"> - 2 Sides hard coated sheet, with improved level of mar-resistance - High optical quality base sheet - 5 years UV weathering 	0.780-0.600 / 2.00-15.00
LEXAN MARGARD FMRT102 sheet	<ul style="list-style-type: none"> - Formable abrasion resistant LEXAN FMRT sheet is intended for use in formed applications requiring abrasion resistance in thicker gauges - Best suited for non-UV intensive applications 	0.118-0.250 / 3.00-6.35

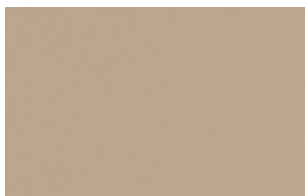


ADVANCED FLAME RETARDANT SHEET

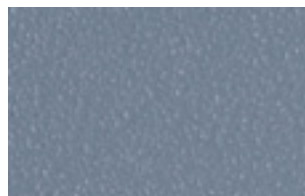
SABIC offers a variety of flame retardant sheet products. Our opaque and translucent material portfolio offers lightweight and high impact resistant materials and also helps our customers in aircraft and railway interior segment to meet stringent regulations.

SABIC's flame retardant sheet portfolio offers compliance to flame, smoke, toxicity, and heat release regulations, reduces overall system costs, and enhances the aesthetics, safety, and comfort of the application space.

SURFACE TEXTURES



5 TEXTURE
Matte texture for low gloss surfaces



6 TEXTURE
Rougher texture for better texture retention after forming and matte surface



11N TEXTURE
Haircell texture for maximum resistance to abrasion

POTENTIAL APPLICATIONS:

- Electrical cabinets
- Medical device housings
- Seating
- Wall/ceiling cladding
- Galley applications
- Light diffusers

KEY BENEFITS:

- Compliance with key industry requirements
 - Flame resistance
 - Low smoke density
 - Low toxicity
 - Heat release
- Abrasion resistance by surface texture
- Impact resistance
- Dimensional stability
- Thermoformable
- Lightweight
- All LEXAN™ and ULTEM™ sheet materials are designed to meet Boeing BSS 7239 and Airbus ABD0031 toxicity standards



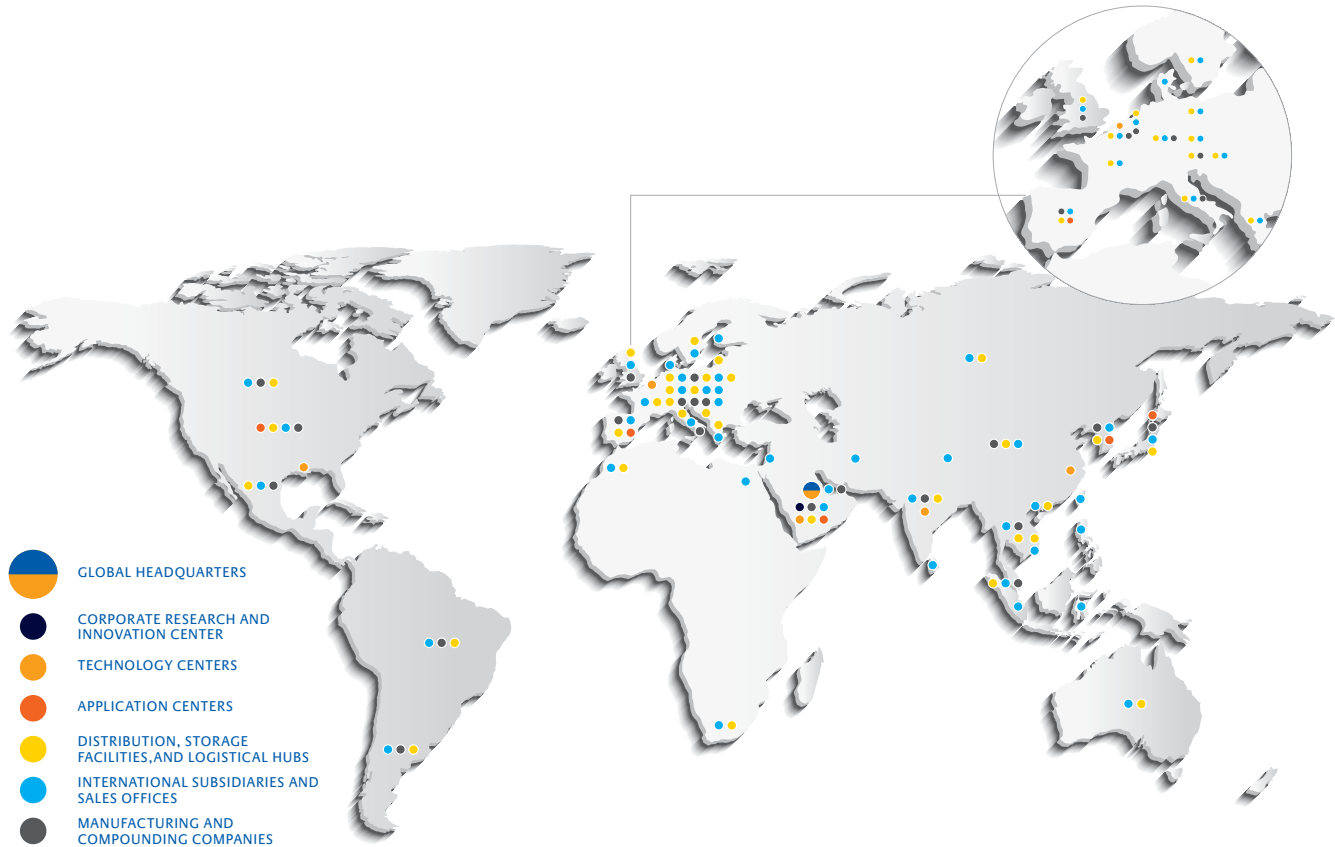
PRODUCT OVERVIEW

Product	Description / Key Features	Gauge Range (in / mm)
LEXAN 9604 sheet	<ul style="list-style-type: none">- Specifically developed for flame retardant applications- UL listed- It is formulated to meet FAR 25.853 12 and 60 second vertical burn tests	0.030-0.125 / 0.76-3.20
LEXAN F2104 sheet	<ul style="list-style-type: none">- Specifically developed for flame retardant applications- UL listed- It is formulated to meet FAR 25.853 12 and 60 second vertical burn tests	0.125-0.500 / 3.20-12.70
LEXAN 96054 sheet	<ul style="list-style-type: none">- Offers light diffusion and privacy- UL listed	0.040-0.125 / 1.00-3.20
LEXAN MARGARD™ MRAC sheet	<ul style="list-style-type: none">- MARGARD coated flame retardant sheet offering excellent impact resistance and abrasion resistance- Meets FAR 25.853 12 and 60 second vertical burn tests- Can be used in flat, vertical applications	0.060-0.500 / 1.50-12.70
LEXAN MARGARD FMR604 sheet	<ul style="list-style-type: none">- Coated flame retardant sheet offering excellent impact resistance and abrasion resistance- Meets FAR 25.853 12 and 60 second vertical burn tests- Can be drape-formed or cold-formed to soft radii	0.030-0.125 / 0.76-3.20
LEXAN F6000 sheet series	<ul style="list-style-type: none">- F6000 series is an opaque sheet available in a variety of textures- Meets FAR 25.853 12 and 60 second vertical burn tests- UL listed: V0 at .060 in/ 1.5 mm or greater	—
LEXAN LIGHT F6L300 sheet series	<ul style="list-style-type: none">- Offers up to 40% weight savings when replacing traditional PVC/PMMA blend based sheet products- Meets FAR 25.853 12 and 60 second vertical burn tests- Suede / Matte	0.047-0.157 / 1.20-4.00

Product	Description / Key Features	Gauge Range (in / mm)
ULTEM™ 1668A sheet (Polyetherimide)	<ul style="list-style-type: none"> - Developed to meet FAR 25.853 12 and 60 second vertical burn, OSU heat release, and smoke density tests - Chemical and heat resistance - High Heat resistance HDT 395 °F and broad chemical resistance - May be thermoformed, pressure formed, twin sheet formed, or used in flat or cold-formed applications - Velvet texture 	0.040-0.157 / 1.40-3.20
ULTEM R16SG29 sheet	<ul style="list-style-type: none"> - Deep velvet - Meets ASTM E162 (Flame spread ≤35), ASTM E662 (Smoke density 1.5 mins ≤100), 4 mins ≤200, SMP800C Bombardier toxicity standard - High Heat resistance HDT 395 °F and broad chemical resistance 	0.055-0.157 / 1.40-4.00
LEXAN™ H6500 sheet	<ul style="list-style-type: none"> - Matte and suede textures available - Bromine and chlorine free flame retardance - High modulus PC/ABS - Meets US FRA standards, ASTM E162 (Flame spread ≤35), ASTM E662 (Smoke density 1.5 mins ≤100), 4 mins ≤200, SMP800C Bombardier toxicity standard 	0.060-0.236 / 1.52-6.00
LEXAN KH6500 sheet	<ul style="list-style-type: none"> - Fine Matte cap layer film - Anti-graffiti and enhanced cleanability - Broad Chemical Resistance - Meets US FRA standards, ASTM E162 (Flame spread ≤35), ASTM E662 (Smoke density 1.5 mins ≤100), 4 mins ≤200, SMP800C Bombardier toxicity standard 	0.060-0.236 / 1.52-6.00
LEXAN XHR6000 sheet	<ul style="list-style-type: none"> - Lightweight, solid thermoplastics for aircraft interiors that can help reduce weight by up to 12% vs. traditional PVC/PMMA and meets FAR25.853 12 and 60 second vertical burn, OSU heat release, and smoke density tests 	0.040-0.157 / 1.00-4.00
LEXAN XHR2000 sheet	<ul style="list-style-type: none"> - A pioneering clear solution for aircraft interiors with 80% light transmission – the highest level of light transmission available in an OSU-compliant sheet material today - Clear coated XHR2HC1 (one-side) and XHR2HC2 (two-side) coated sheet materials meet FAR25.853 12 and 60 second vertical burn, OSU heat release, and smoke density tests 	0.040-0.125 / 1.00-3.20
LEXAN XHR LIGHT sheet series	<ul style="list-style-type: none"> - The lightest thermoplastic sheet option available today with high performance patent- pending formulation that offers up to 36% weight savings vs. traditional PVC/PMMA -based sheet products and meets FAR25.853 12 and 60 second vertical burn, OSU heat release, and smoke density tests 	0.047-0.157 / 1.20-4.00



GLOBAL COMPANY WITH LOCAL SERVICES & SUPPLY



SABIC IS COMMITTED TO ITS CUSTOMERS AROUND THE WORLD WITH A PORTFOLIO OF SPECIALTY FILM & SHEET MATERIALS, APPLICATION SUPPORT AND WORLDWIDE SERVICES.

Specialty Film & Sheet business operates a worldwide network of sales, distribution, research, manufacturing, and technical service facilities. With all twelve ISO certified manufacturing sites across the USA, Canada, the Netherlands, Italy, Austria, China, Malaysia, India, and Brazil, the company serves customers around the world in a broad spectrum of industries and applications. As a business unit of SABIC, Specialty Film & Sheet benefits from global cross-business resources and expertise.

From its network of technical centers in the United States, the Netherlands, Saudi Arabia, China, Japan, Korea, and India, the company provides a variety of services. These include hands-on engineering and technical support that extends from selecting the right material to characterization of mechanical, thermal, UV/heat aging data, advanced light measurements, optical modeling to part design and installation guidelines. The company also offers a local team, complete supply chain

and distribution organization to ensure a reliable source of materials to its customers wherever their manufacturing site is located.

CONTACT US

Middle East and Africa

SABIC Global Headquarters

PO Box 5101
Riyadh 11422
Saudi Arabia
T +966 (0) 1 225 8000
F +966 (0) 1 225 9000
E info@sabic.com

Americas

Specialty Film & Sheet
1 Plastics Avenue
Pittsfield, MA 01201
USA
T 800 323 3783 toll-free
T 1 413 448 6655
F (888) 443 2033
E sales.spinside@sabic-ip.com

Europe

Specialty Film & Sheet
Plasticslaan 1
4612 PX
Bergen op Zoom
The Netherlands
T +31 (0)164 293678
F +31 (0)164 293272
E sfs.info@sabic-ip.com

Asia Pacific

Specialty Film & Sheet
2550 Xiupu Road
Pudong
201319 Shanghai
China
T +86 21 2037 8188
F +86 21 2037 8288
E sfs.info@sabic-ip.com



DISCLAIMER: THE MATERIALS, PRODUCTS AND SERVICES OF SAUDI BASIC INDUSTRIES CORPORATION (SABIC) OR ITS SUBSIDIARIES OR AFFILIATES ("SELLER") ARE SOLD SUBJECT TO SELLER'S STANDARD CONDITIONS OF SALE, WHICH ARE AVAILABLE UPON REQUEST. INFORMATION AND RECOMMENDATIONS CONTAINED IN THIS DOCUMENT ARE GIVEN IN GOOD FAITH. HOWEVER, SELLER MAKES NO EXPRESS OR IMPLIED REPRESENTATION, WARRANTY OR GUARANTEE (i) THAT ANY RESULTS DESCRIBED IN THIS DOCUMENT WILL BE OBTAINED UNDER END-USE CONDITIONS, OR (ii) AS TO THE EFFECTIVENESS OR SAFETY OF ANY DESIGN OR APPLICATION INCORPORATING SELLER'S MATERIALS, PRODUCTS, SERVICES OR RECOMMENDATIONS. UNLESS OTHERWISE PROVIDED IN SELLER'S STANDARD CONDITIONS OF SALE, SELLER SHALL NOT BE RESPONSIBLE FOR ANY LOSS RESULTING FROM ANY USE OF ITS MATERIALS, PRODUCTS, SERVICES OR RECOMMENDATIONS DESCRIBED IN THIS DOCUMENT. Each user is responsible for making its own determination as to the suitability of Seller's materials, products, services or recommendations for the user's particular use through appropriate end-use and other testing and analysis. Nothing in any document or oral statement shall be deemed to alter or waive any provision of Seller's Standard Conditions of Sale or this Disclaimer, unless it is specifically agreed to in a writing signed by Seller. Statements by Seller concerning a possible use of any material, product, service or design do not, are not intended to, and should not be construed to grant any license under any patent or other intellectual property right of Seller or as a recommendation for the use of any material, product, service or design in a manner that infringes any patent or other intellectual property right.

SABIC and brands marked with ™ are trademarks of SABIC or its subsidiaries or affiliates.
© 2015 Copyright SABIC. All Rights Reserved.