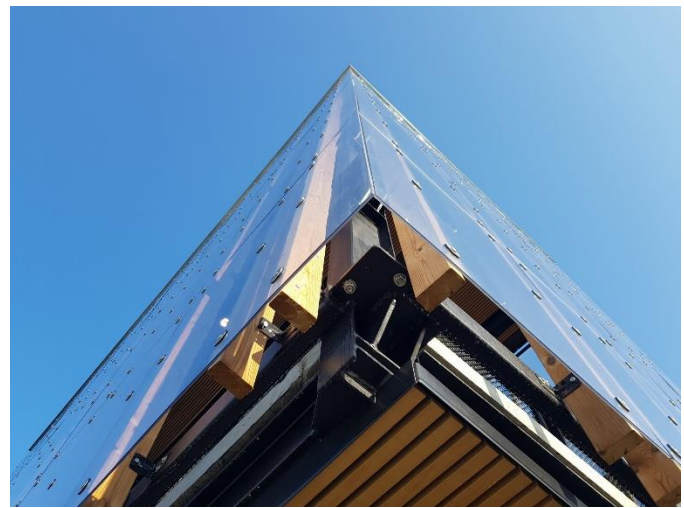


FACADE GLAZING FOR SUSTAINABLE URBAN PLANNING SOLUTIONS

CASE HISTORY



APPLICATION

Façade Glazing Train Station

LOCATION

LEANGEN Train Station,
Norway

KEY CHALLENGES

A railway station with clear façade glazing, easy to install, high impact resistant and UV protected to create an urban situation with the passing trains as a natural part of it.

SOLUTION

Clear, two side UV protected LEXAN™ polycarbonate (PC) EXELL™-D sheet for overhead and vertical glazing applications.

This unique solid sheet is amongst the most extensive on the market today, offering hundreds of possible combinations of structures, colors, coatings and finishes.

RESULTS

LEXAN™ EXELL™-D sheet in 6 mm, a transparent, and UV resistant material;

- ✓ Easy to install
- ✓ Easy to clean
- ✓ High impact resistant
- ✓ Thermoformable
- ✓ Comes with a 10 Year limited warranty against breakage, yellowing and loss of light transmission. Available in clear and colors.

CHALLENGES

For the new railway station facade, the challenge was to combine different product features in one product solution. A lightweight material, which is easy to install, not too massive and which would give a natural look to the environment.

SABIC supported Astrup AS for the engineering calculation based on the number of holes in the sheets for fixation points, needed for high speed passing trains.



SOLUTION & RESULTS

LEXAN™ EXELL™-D polycarbonate (PC) clear sheet is lightweight, has extreme high impact strength and offers the requirements that fulfilled the needs to complete the structure of the Leangen Train Station in Norway.



FOR FURTHER INFORMATION

SABIC Functional Forms Europe
 M : +31 6 23 98 09 35 / +33 141 978 256
 E : Stephan.Koerhuis@sabic.com
 E : Eric.Gervais@sabic.com
 W : www.sabic.com/ff

AUTHORIZED DISTRIBUTOR

Astrup AS
 Mr. Birger Eidskrem
 Manager Plastics Department
 Haavard Martinsens vei 34
 N-0978 Oslo, Norway
 T : +47 22 79 15 00
 E : birger.eidskrem@astrup.no
 W : www.astrup.no



DISCLAIMER: THE MATERIALS, PRODUCTS AND SERVICES OF SAUDI BASIC INDUSTRIES CORPORATION (SABIC) OR ITS SUBSIDIARIES OR AFFILIATES ("SELLER") ARE SOLD SUBJECT TO SELLER'S STANDARD CONDITIONS OF SALE, WHICH ARE AVAILABLE UPON REQUEST. INFORMATION AND RECOMMENDATIONS CONTAINED IN THIS DOCUMENT ARE GIVEN IN GOOD FAITH. HOWEVER, SELLER MAKES NO EXPRESS OR IMPLIED REPRESENTATION, WARRANTY OR GUARANTEE (i) THAT ANY RESULTS DESCRIBED IN THIS DOCUMENT WILL BE OBTAINED UNDER END-USE CONDITIONS, OR (ii) AS TO THE EFFECTIVENESS OR SAFETY OF ANY DESIGN OR APPLICATION INCORPORATING SELLER'S MATERIALS, PRODUCTS, SERVICES OR RECOMMENDATIONS. UNLESS OTHERWISE PROVIDED IN SELLER'S STANDARD CONDITIONS OF SALE, SELLER SHALL NOT BE RESPONSIBLE FOR ANY LOSS RESULTING FROM ANY USE OF ITS MATERIALS, PRODUCTS, SERVICES OR RECOMMENDATIONS DESCRIBED IN THIS DOCUMENT. Each user is responsible for making its own determination as to the suitability of Seller's materials, products, services or recommendations for the user's particular use through appropriate end-use and other testing and analysis. Nothing in any document or oral statement shall be deemed to alter or waive any provision of Seller's Standard Conditions of Sale or this Disclaimer, unless it is specifically agreed to in a writing signed by Seller. Statements by Seller concerning a possible use of any material, product, service or design do not, are not intended to, and should not be construed to grant any license under any patent or other intellectual property right of Seller or as a recommendation for the use of any material, product, service or design in a manner that infringes any patent or other intellectual property right. SABIC and brands marked with ™ are trademarks of SABIC or its subsidiaries or affiliates, unless otherwise noted.

© 2021 Saudi Basic Industries Corporation (SABIC). All Rights Reserved.

Any brands, products or services of other companies referenced in this document are the trademarks, service marks and/or trade names of their respective holders.